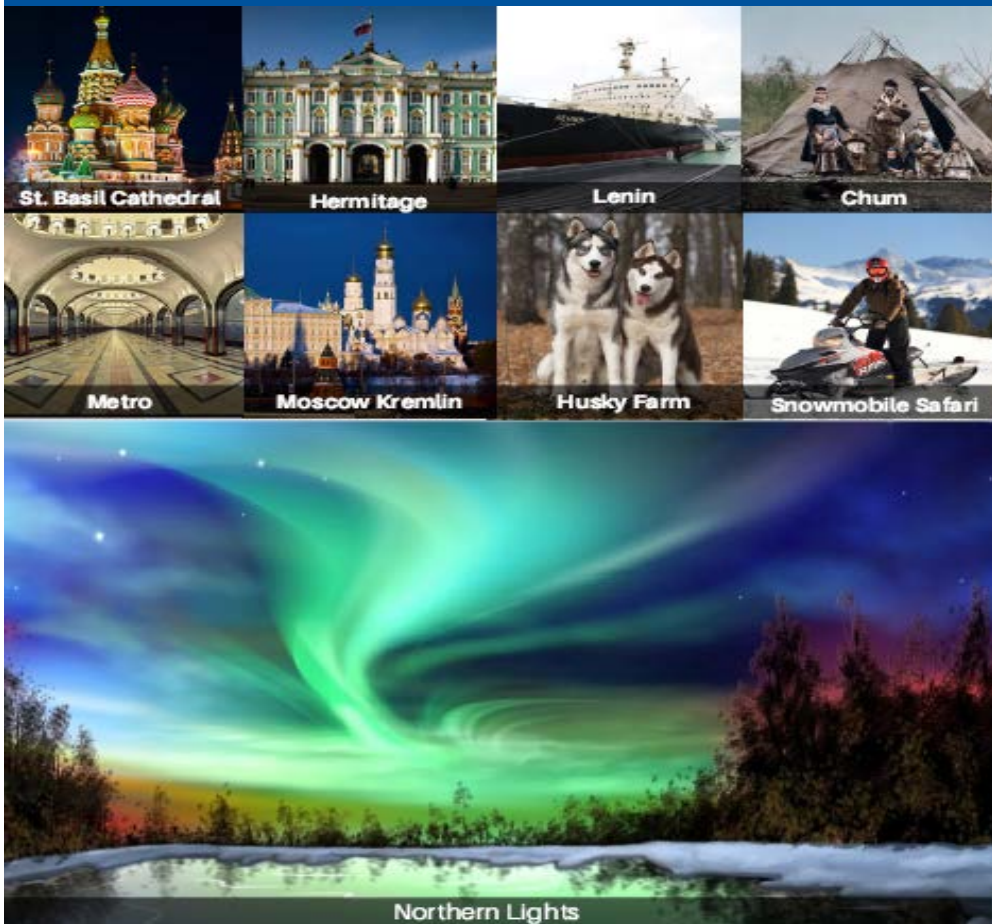


**AEROFLOT**  
Russian Airlines



**NORTHERN LIGHTS IN RUSSIA  
(MOSCOW - ST. PETERSBURG - MURMANSK)  
10 DAYS / 9 NIGHTS**

**TRAVEL DATE:**

NOV 16 – NOV 25, 2018    &    NOV 23 – DEC 02, 2018

**TOUR PACKAGE COST PER PERSON:  
USD 5,530 / PAX (AIRFARE/HOTEL/TOUR)**

**NOTE: RATES & TAXES ARE SUBJECT TO CHANGE WITHOUT PRIOR NOTICE.  
RESERVATION IS VALID FOR MINIMUM 10 PAX. SALES AND TICKETING VALID  
UNTIL JUNE 30, 2018 ONLY. TERMS AND CONDITIONS APPLY**

**INCLUSIONS:**

Roundtrip airfare  
Russian Visa Fee  
4\* Hotel accommodation, meals and tours as per Itinerary  
Business class coach  
English Speaking Tour Guide  
Entrance fees according to the program

**EXCLUSIONS:**

Travel Tax – Php 1,620.00  
Tipping Budget – Usd 10.00 / pax / day  
Airport / Hotel Portorage

**FLIGHT DETAILS:**

CX904	MANILA-HONGKONG	0630	0845
SU213	HONGKONG-MOSCOW	1155	1710
SU022	MOSCOW-ST. PETERSBURG	1610	1735
SU6343	ST. PETERSBURG-MURMANSK	0835	1035
SU1321	MURMANSK-MOSCOW	1310	1525
SU212	MOSCOW-HONGKONG	1940	1005+1
CX919	HONGKONG-MANILA	1415	1640

**VISA REQUIREMENTS:**

Visa Application Form  
Valid Passport (at least 1 year valid)  
2 Passport Size picture white background  
Birth Certificate for minor applicants

**DEPOSIT REQUIREMENTS:**

Deposit of 30% per pax upon booking (NON-REFUNDABLE)  
Full payment upon visa approval  
Cancellation charges apply 1 month prior departure

## **Northern Lights in Russia - Daily Itinerary** **(Moscow - St. Petersburg - Murmansk)**

### **DAY 1. MOSCOW (D)**

Arrival in Moscow. Meet with the Guide at SVO airport. Dinner and then transfer to hotel for check-in. Free time at own leisure

### **DAY 2. MOSCOW (BLD)**

Meet and pick up by Guide at Hotel. Moscow City Tour - Red Square, Alexandrovskiy garden with the tomb of the Unknown soldiers, Catherine the Great Grotto, fountains and the Kremlin walls, GUM Department Store and St. Basil's Cathedral. Visit Kremlin Territory and Armoury Chamber. Excursion to Metro stations and then to Arbat Street for souvenir shopping. Transfer back to Hotel

### **DAY 3. MOSCOW / ST. PETERSBURG (BLD)**

Early check out at the hotel, meet and pick up by Guide at Hotel. Panoramic city sightseeing tour (Vorobiovi Hills, Moscow State University, Novodevochiy Convent, Victory Park, the Triumphal Arch, Kutuzovsky Prospect). After Lunch, proceed to SVO airport for your flight to St. Petersburg. Meet with the Guide at LED airport. Transfer to hotel for check-in. Dinner at Nikolaevsky Palace with Folklore Show.

### **DAY 4. ST. PETERSBURG (BLD)**

Meet and pick up by Guide at Hotel. Visit to Hermitage Museum. Afterwards, visit Pushkin (Catherine's Palace and it's gardens / Amber Room). Transfer back to hotel

### **DAY 5. ST. PETERSBURG (BLD)**

Meet and pick up by Guide at Hotel. Start Panoramic City Tour with visit of St. Isaac Cathedral, Peter and Paul Fortress and Church on the Spilled Blood. Free time for shopping. Transfer back to Hotel

### **DAY 6. ST. PETERSBURG / MURMANSK (BLD)**

Early check out at the hotel, meet and pick up by Guide to Hotel. Proceed for transfer to LED airport for your flight to Murmansk. Arrival in Murmansk airport, meet with the Guide. Visit of the First Nuclear Icebreaker "Lenin", the Northern Navy Museum and short Panoramic tour. Transfer to hotel for check-in. Watch the Aurora Borealis at the highest point of the Murmansk City (subject to weather conditions)

### **DAY 7. LOVOZERO AREA / HUSKY FARM (BLD)**

Check out at the hotel in the morning. Meet the Guide at the hotel. Start our trip to Lovozero Village by Bus. Then we go to the Husky farm. You will learn the wonderful story of the race "Siberian Husky", get a chance to communicate with the charming and sweet dogs as well as to see reindeers and sledge behind them. You will have lunch in traditional dwelling named CHUM (like wigwam) and listen stories about Northern nature and local traditions. We can also try our ability to rule a dogs' sled. Transfer to Laplandia tourist base by snowmobiles and sleds. Transfer to guest house Laplandia village for check in. Visit of Russian Banyia (Sauna). Watch the Aurora Borealis at the highest point of the Murmansk City (subject to weather conditions)

### **DAY 8. SAAMI VILLAGE / KIROVSK (BLD)**

Early morning Breakfast. Meet the Guide, transfer back from Laplandia tourist base to Lovozero by snowmobiles and sleds and then transfer from Lovozero Village by bus. Transfer to Saami Settlement. There are some traditional dwellings with floor covered by reindeer fur (Kuvaksa) standing at the place. Several beautiful reindeers are always in the settlement and they like to be stroked and fed by moss and bread. Also there are foxes and polar foxes, hares and hunting birds. It will be offered to play some Saami traditional games and try your hand at throwing a lasso. We will have lunch in Kuvaksa around a fire place. Those who like may put on Saami clothes and make photos with reindeers as well as sledge behind them. Then we proceed to Kirovsk. Check in to Guest House. Watch the Aurora Borealis at the highest point of the Murmansk City (subject to weather conditions)

### **DAY 9. KIROVSK / MURMANSK (BLD)**

Check out at the hotel in the morning. Meet the Guide at the hotel. Transfer to Snow Village. Experience Snowmobile Safari in Khibiny mountains. In the afternoon, we proceed to Murmansk. Check-in at the hotel upon arrival. Watch the Aurora Borealis at the highest point of the Murmansk City (subject to weather conditions)

### **DAY 10. MURMANSK / MANILA (B)**

Early morning check out at the hotel. Meet the Guide at the hotel. Transfer to Murmansk airport for your flight back to Manila.